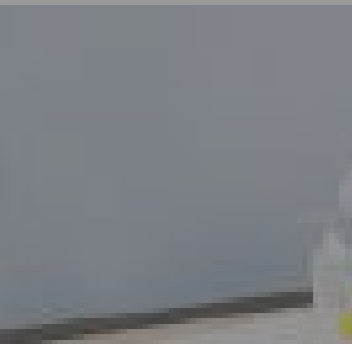
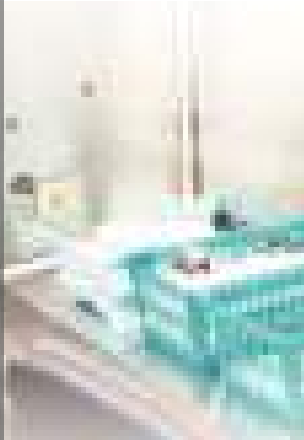


# LABPLAS



## PRODUCT CATALOG

LABPLAS PRODUCTS  
Serving your Industry

FOOD

AGRICULTURE

ENVIRONMENT

VETERINARY

RESEARCH

PHARMACEUTICAL

[www.labplas.com](http://www.labplas.com)

## HIGH PRECISION SAMPLING INNOVATIONS TO YOUR INDUSTRY

Our different brands of products are an economical and efficient way to collect, contain and carry samples with confidence. Our sterile bags are used for environmental sampling, pharmaceutical research, quality assurance procedures (QA/QC), food industry applications and veterinary medicine.



### Sampling in Food

- Collection of samples requires sterile equipment and must be done meticulously to avoid samples contaminations;
- Labplas sterile sampling bags are easier to handle than vials;
- Labplas sterile sampling bags require very little storage space, are easy to transport and are single-use which saves a lot of time and energy;
- Several tests on food contact surfaces and non-food contact surfaces have to be conducted to determine whether the plant is contaminated or not.

#### SUGGESTED BRANDS

TWIRL'EM • SECURE-T • FILTRA-BAG • SANI-SPONGE • SANI-STICK

### Sampling in Environment

- Experts say that polyethylene can be used for any type of water sampling;
- Collection of plant samples for plant disease identification.

**Complies with regulatory and industry requirements:**  
EPA (US Environment Protection Agency)

#### SUGGESTED BRANDS

WATER SAMPLING KIT • STAND-UP

### Sampling in Pharmaceutical

- Contaminants and particles must be reduced to a minimum;
- Material used in a cleanroom must be clean and approved.

#### SUGGESTED BRANDS

TWIRL'EM • TWIRL'EM CLEAN ROOM

### Sampling in Agriculture

- Contamination sources in grains are multiple, like wind, bird feces and the transport of fungi by the machinery;
- Soil testing is used to facilitate fertilizer composition and dosage selection used on land in both agricultural and horticultural industries.

#### SUGGESTED BRANDS

TWIRL'EM LARGE FORMAT • TWIRL'EM ECOLO

### Sampling in Veterinary

- Identify potential risk for disease problems;
- Sampling for DNA tests particularly used for the identification of genetic differences between animal populations;
- Food analysis can help you protect the health of your livestock and can assist in making sure your livestock and crops are safe for human consumption.

#### SUGGESTED BRANDS

TWIRL'EM • SANI-SPONGE

### Sampling in Research

- To identify a bacterium;
- To mix ingredients together and ensure they won't be contaminated;
- To take an aliquot or archiving samples.

#### SUGGESTED BRANDS

TWIRL'EM LARGE FORMAT • STAND-UP

TWIRL'EM®

TWIRL'EM  
ECOLO

Sani-Stick®

SANI SPONGE®

SECURE-T®

FILTRA-BAG®

SECURE-STRIP®

RackLab



## ABOUT US

At the dawn of our 30<sup>th</sup> anniversary, Labplas' mission remains to provide our customers with sterile sampling solutions, which are simple and easy to use, and which meet all of the specific requirements of the various industries.

Since 1987, we have been serving the food, veterinary, environmental and pharmaceutical markets, addressing our highly specialized clients in their very specific analysis needs.

Today Labplas products are available in more than fifty countries thanks to an extended network of independent distributors who adhere to our mission and are active in the many areas of laboratory equipment and consumables. Our sterile sampling solutions are state-of-the-art tools that ensure the protection and safety of any samples against contamination during their collection, transportation, storage and testing.

Our constant concern to innovate and question our capacity to help the scientific community enabled us to stand out from our competition and to remain among the best companies in the field. This dedication drives us during the development of all our products, always aiming for the benefit of our users and their processes.

Moreover, our team understands the specificity and importance of the sample collection. It is in this perspective that our customer service is always happy to discuss your specific needs and help you identify the various options available.

Rest assured that we will continue to surpass ourselves in the coming years. Innovation is at the heart of our business strategy and to offer high-quality products that meet the growing and evolving needs of our international clientele.



Danielle Lafond  
President



Benoit Brouillette  
General Manager

Danielle Lafond  
President

## LABPLAS TWIRL'EM STERILE SAMPLING BAGS

TWIRL'EM sampling bags provide a sterile, secure, contaminant-free pliant container that ensures dependable analysis results. Bags accommodate solid, semi-solid and liquid and are R-NASE, D-NASE, Pyrogen and BPA free.



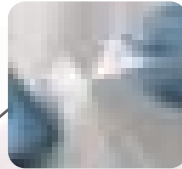
### Sterility:

- Extrusion process at high temperatures between 220° C and 240° C guarantees internal sterility;
- Product sterility verified through testing of random samples;
- In addition, sterilization by the extrusion process has been scientifically validated
- R-NASE, D-NASE, Pyrogen and BPA free;

### Product Advantages:

- Maximum bag mouth opening to facilitate insertion of sample;
- Lot number traceability for every product;
- Product meets USDA and ACIA industry standards and are made with FDA-compliant material.

Tear-off opening.  
Ensure & maintain sterility  
until usage of the bag.

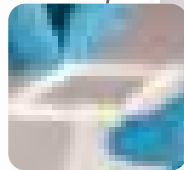


Safety tabs.  
Ask for our safety  
tabs to avoid any possible  
puncture of the sample bag.

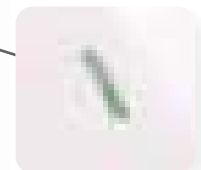


Choose from different possibilities  
of wires to add resistance to your  
closure system.

- 2 round wires;
- 1 round wire & 1 flat wire;
- 2 flat wires.



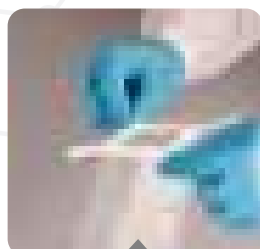
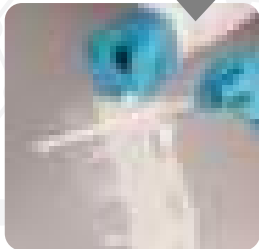
Pull tabs



Write-on area available

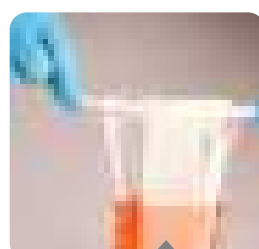
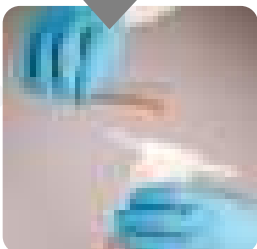
## INSTRUCTION STEP BY STEP

1 Tear off the top of the bag along the perforations



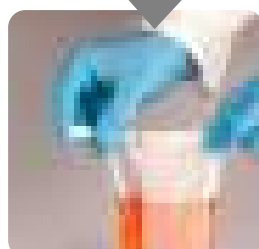
2 Use pull-tabs to pull open the bag

3 Place sample in bag



4 Hold bag by wire ends and twirl to close

5 Fold both wire ends onto the bag to provide air-tight and leak-proof closure



## THE ONES WITH THE GREEN COLORED CLOSURE SYSTEM!

Labplas offers the first environmentally friendly sterile sampling bag on the market.

The ECOLO products retain all the characteristics of the TWIRL'EM line while being made of entirely biodegradable LDPE tubing. It is an economical and timesaving green alternative to rigid containers.

Twirl'em  
Ecolo



### Safety Tabs - Clear - Closure with 2 round wires

Code	*P	oz	ml	in x in	mm x mm	mils	µm
EPL-3070E		4	130	3 x 7	76 x 178	2.5	63
EPL-4590E		15	450	4.5 x 9	114 x 229	2.5	63
EPL-5590E		22	650	5.5 x 9	140 x 229	3.0	76
EPL45590E		22	650	5.5 x 9	140 x 229	4.0	101
EPL-5515E		50	1500	5.5 x 15	140 x 382	3.0	76
EPL-7012E		55	1650	7 x 12	178 x 305	3.0	76
EPL47012E		55	1650	7 x 12	178 x 305	4.0	101
EPL-7015E		85	2500	7 x 15	178 x 382	3.0	76

### Safety Tabs - Printed - Closure with 2 round wires

Code	*P	oz	ml	in x in	mm x mm	mils	µm
<b>EPR-3050E</b>		<b>2</b>	<b>60</b>	<b>3 x 5</b>	<b>76 x 127</b>	<b>2.5</b>	<b>63</b>
EPR-3070E		4	130	3 x 7	76 x 178	2.5	63
EPR-4590E		15	450	4.5 x 9	114 x 229	2.5	63
EPR-5590E		22	650	5.5 x 9	140 x 229	3.0	76
EPR45590E		22	650	5.5 x 9	140 x 229	4.0	101
<b>EPR-7012E</b>		<b>55</b>	<b>1650</b>	<b>7 x 12</b>	<b>178 x 305</b>	<b>3.0</b>	<b>76</b>
EPR47012E		55	1650	7 x 12	178 x 305	4.0	101

### Safety Tabs - Clear - Closure with 1 round wire & 1 flat wire

Code	*P	oz	ml	in x in	mm x mm	mils	µm
EFL-3070E		4	130	3 x 7	76 x 178	2.5	63
EFL-4590E		15	450	4.5 x 9	114 x 229	2.5	63
EFL-5590E		22	650	5.5 x 9	140 x 229	3.0	76
EFL-5512E		36	1080	5.5 x 12	140 x 305	3.0	76
EFL-7012E		55	1650	7 x 12	178 x 305	3.0	76
EFL47012E		55	1650	7 x 12	178 x 305	4.0	101
EFL-1012E		76	2250	10 x 12	254 x 305	4.0	101
EFL-1015E		135	4000	10 x 15	254 x 382	4.0	101

### Safety Tabs - Printed - Closure with 1 round wire & 1 flat wire

Code	*P	oz	ml	in x in	mm x mm	mils	µm
EFR-3070E		4	130	3 x 7	76 x 178	2.5	63
EFR-4590E		15	450	4.5 x 9	114 x 229	2.5	63
EFR-5590E		22	650	5.5 x 9	140 x 229	3.0	76
EFR-7012E		55	1650	7 x 12	178 x 305	3.0	76
EFR47012E		55	1650	7 x 12	178 x 305	4.0	101
EFR-1012E		76	2250	10 x 12	254 x 305	4.0	101
EFR-1015E		135	4000	10 x 15	254 x 382	4.0	101

## USE A RIGID CONTAINER ONLY WHEN IT'S REALLY NEEDED!

Safety Tabs TWIRL'EM bags features puncture-proof tabs for protection from possible damage due to wire-end punctures. TWIRL'EM Easy-To-Close Bags are ideal for sampling and product analysis.



## Twirl'em Sterile Sampling Bag



### Safety Tabs - Clear - Closure with 2 round wires

Code	*P	oz	ml	in x in	mm x mm	mils	µm
EPL-3050		2	60	3 x 5	76 x 127	2.5	63
EPL-3070		4	130	3 x 7	76 x 178	2.5	63
EPL-3570		7	210	3.5 x 7	89 x 178	3.0	76
EPL-4575		12	355	4.5 x 7.5	114 x 190	2.5	63
EPL-4590		15	450	4.5 x 9	114 x 229	2.5	63
EPL-4512		27	800	4.5 x 12	114 x 305	2.5	63
EPL-4515		40	1200	4.5 x 15	114 x 382	2.5	63
EPL-5590		22	650	5.5 x 9	140 x 229	3.0	76
EPL45590		22	650	5.5 x 9	140 x 229	4.0	101
EPL-5515		50	1500	5.5 x 15	140 x 382	3.0	76
EPL-7012		55	1650	7 x 12	178 x 305	3.0	76
EPL47012		55	1650	7 x 12	178 x 305	4.0	101
EPL-7015		85	2500	7 x 15	178 x 382	3.0	76

### Safety Tabs - Printed - Closure with 2 round wires

Code	*P	oz	ml	in x in	mm x mm	mils	µm
EPR-3050		2	60	3 x 5	76 x 127	2.5	63
EPR-3070		4	130	3 x 7	76 x 178	2.5	63
EPR-3570		7	210	3.5 x 7	89 x 178	3.0	76
EPR-4575		12	355	4.5 x 7.5	114 x 190	2.5	63
EPR-4590		15	450	4.5 x 9	114 x 229	2.5	63
EPR-4512		27	800	4.5 x 12	114 x 305	2.5	63
EPR-4515		40	1200	4.5 x 15	114 x 382	2.5	63
EPR-5590		22	650	5.5 x 9	140 x 229	3.0	76
EPR45590		22	650	5.5 x 9	140 x 229	4.0	101
EPR-5515		50	1500	5.5 x 15	140 x 382	3.0	76
EPR-7012		55	1650	7 x 12	178 x 305	3.0	76
EPR47012		55	1650	7 x 12	178 x 305	4.0	101
EPR-7015		85	2500	7 x 15	178 x 382	3.0	76

### Safety Tabs - Clear - Closure with 1 round wire & 1 flat wire

Code	*P	oz	ml	in x in	mm x mm	mils	µm
EFL-3070		4	130	3 x 7	76 x 178	2.5	63
EFL-4590		15	450	4.5 x 9	114 x 229	2.5	63
EFL-5590		22	650	5.5 x 9	140 x 229	3.0	76
EFL-5512		36	1080	5.5 x 12	140 x 305	3.0	76
EFL-7012		55	1650	7 x 12	178 x 305	3.0	76
EFL47012		55	1650	7 x 12	178 x 305	4.0	101
EFL-1012		76	2250	10 x 12	254 x 305	4.0	101
EFL-1015		135	4000	10 x 15	254 x 382	4.0	101

## TWIRL'EM BAGS ARE IDEAL FOR SAMPLING ANY TYPE OF LIQUID AND SOLID SAMPLE.

TWIRL'EM sterile sampling bags are a proven, economical and efficient way to collect, contain and carry samples.

## Twirl'em Sterile Sampling Bag



### Safety Tabs - Printed - Closure with 1 round wire & 1 flat wire

Code	*P	oz	ml	in x in	mm x mm	mils	µm
EFR-3070		4	130	3 x 7	76 x 178	2.5	63
EFR-4590		15	450	4.5 x 9	114 x 229	2.5	63
EFR-5590		22	650	5.5 x 9	140 x 229	3.0	76
EFR-5512		36	1080	5.5 x 12	140 x 305	3.0	76
EFR-7012		55	1650	7 x 12	178 x 305	3.0	76
EFR47012		55	1650	7 x 12	178 x 305	4.0	101
EFR-1012		76	2250	10 x 12	254 x 305	4.0	101
EFR-1015		135	4000	10 x 15	254 x 382	4.0	101

### Regular Tabs - Clear - Closure with 2 round wires

Code	*P	oz	ml	in x in	mm x mm	mils	µm
BPL-5590		22	650	5.5 x 9	140 x 229	3.0	76
BPL-5512		36	1080	5.5 x 12	140 x 305	3.0	76
BPL-5515		50	1500	5.5 x 15	140 x 382	3.0	76
BPL-7012		55	1650	7 x 12	178 x 305	3.0	76

### Regular Tabs - Printed - Closure with 2 round wires

Code	*P	oz	ml	in x in	mm x mm	mils	µm
BPR-5590		22	650	5.5 x 9	140 x 229	3.0	76
BPR-5512		36	1080	5.5 x 12	140 x 305	3.0	76
BPR-5515		50	1500	5.5 x 15	140 x 382	3.0	76
BPR-7012		55	1650	7 x 12	178 x 305	3.0	76

### Regular Tabs - Clear - Closure with 1 round wire & 1 flat wire

Code	*P	oz	ml	in x in	mm x mm	mils	µm
BFL-5590		22	650	5.5 x 9	140 x 229	3.0	76
BFL45590		22	650	5.5 x 9	140 x 229	4.0	101
BFL-5512		36	1080	5.5 x 12	140 x 305	3.0	76
BFL-5515		50	1500	5.5 x 15	178 x 382	3.0	76
BFL-7012		55	1650	7 x 12	178 x 305	3.0	76

### Regular Tabs - Printed - Closure with 1 round wire & 1 flat wire

Code	*P	oz	ml	in x in	mm x mm	mils	µm
BFR-5590		22	650	5.5 x 9	140 x 229	3.0	76
BFR-5512		36	1080	5.5 x 12	140 x 305	3.0	76
BFR-5515		50	1500	5.5 x 15	140 x 382	3.0	76
BFR-7012		55	1650	7 x 12	178 x 305	3.0	76



## SENSITIVE TO LIGHT?

The Opaque TWIRL'EM is used by the food, research, pharmaceutical and environmental industries. The black resin is a total light barrier that protects photosensitive substances such as vitamins, chemicals and pharmaceuticals, food supplements, plant extracts or biological tissues.



## Twirl'em

●●● Opaque



### Safety Tabs - Opaque - Printed - Closure with 2 round wires

Code	*P	oz	ml	in x in	mm x mm	mils	µm
EPN-4590		15	450	4.5 x 9	114 x 229	2.5	63
EPN-4512		30	900	4.5 x 12	114 x 305	2.5	63
EPN-4515		40	1200	4.5 x 15	114 x 382	2.5	63

## IT'S BLUE! IT'S NEW!

Labplas introduces a line of products specifically for the food industry. In food factories, several tests must be performed on surfaces which come into contact with food as well as environmental surfaces, to determine whether the plant is contaminated or not.



## Twirl'blue

●●●



### Polyethylene blue sterile bag

Code	*P	oz	ml	in x in	mm x mm	mils	µm
EPR-4590-B		15	450	4.5 x 9	114 x 229	2.5	63
EPR-5590-B		22	650	5.5 x 9	140 x 229	3.0	76
EPR-7012-B		55	1650	7 x 12	178 x 305	3.0	76



## DOUBLE PACKED FOR INTERNAL AND EXTERNAL STERILITY!

With the TWIRL'EM CLEAN ROOM application packaging, you can bring your sterile sampling bags into your clean room without any worries about contaminations. The bags are sterile inside and out.

**Twirl'em**  
Clean Room



( 40 x 25 )

### DOUBLE POUCH FOR CLEAN ROOM APPLICATIONS

Safety Tabs - Clear - Closure with 2 round wires

Code	*P	oz	ml	in x in	mm x mm	mils	µm
EPL-4512S		27	800	4.5 x 12	114 x 305	2.5	63
EPL-5590S		22	650	5.5 x 9	140 x 229	3.0	76
EPL-5515S		50	1500	5.5 x 12	140 x 382	3.0	76
EPL-7012S		55	1650	7 x 12	178 x 305	3.0	76

Safety Tabs - Printed - Closure with 2 round wires

Code	*P	oz	ml	in x in	mm x mm	mils	µm
EPR-4512S		27	800	4.5 x 12	114 x 305	2.5	63
EPR-5590S		22	650	5.5 x 9	140 x 229	3.0	76
EPR-5515S		50	1500	5.5 x 12	140 x 382	3.0	76
EPR-7012S		55	1650	7 x 12	178 x 305	3.0	76

Safety tabs - Clear - Closure with 1 round wire & 1 flat wire

Code	*P	oz	ml	in x in	mm x mm	mils	µm
EFL-5590S		22	650	5.5 x 9	140 x 229	3.0	76
EFL45590S		22	650	5.5 x 9	140 x 229	4.0	101
EFL-5512S		36	1080	5.5 x 12	140 x 305	3.0	76
EFL-7012S		55	1650	7 x 12	178 x 305	3.0	76
EFL47012S		55	1650	7 x 12	178 x 305	4.0	101
EFL-1012S		76	2250	10 x 12	254 x 305	4.0	101
EFL-1015S		135	4000	10 x 15	254 x 382	4.0	101

Safety tabs - Printed - Closure with 1 round wire & 1 flat wire

Code	*P	oz	ml	in x in	mm x mm	mils	µm
EFR-5590S		22	650	5.5 x 9	140 x 229	3.0	76
EFR45590S		22	650	5.5 x 9	140 x 229	4.0	101
EFR-5512S		36	1080	5.5 x 12	140 x 305	3.0	76
EFR-7012S		55	1650	7 x 12	178 x 305	3.0	76
EFR47012S		55	1650	7 x 12	178 x 305	4.0	101
EFR-1012S		76	2250	10 x 12	254 x 305	4.0	101
EFR-1015S		135	4000	10 x 15	254 x 382	4.0	101



## SAMPLING LARGE VOLUMES, NOT A PROBLEM!

Labplas recommends the TWIRL'EM LARGE FORMAT for sampling over 1 kilos. The large format bags have a 4 mil.in thickness that ensures safe transportation of heavy samples.



## Twirl'em Large Format



### Safety Tabs - Clear - Closure with 2 flat wires

Code	*P	oz	ml	in x in	mm x mm	mils	µm
EDL41212		102	3 L	12 x 12	305 x 305	4.0	101
EDL41214		145	4.25 L	12 x 14	305 x 356	4.0	101
EDL41216		185	5.5 L	12 x 16	305 x 406	4.0	101
EDL41218		228	6.75 L	12 x 18	305 x 457	4.0	101
EDL41220		270	8 L	12 x 20	305 x 508	4.0	101
EDL41224		355	10.5 L	12 x 24	305 x 610	4.0	101
EDL41228		440	13 L	12 x 28	305 x 711	4.0	101
EDL41520		405	12 L	15 x 20	382 x 508	4.0	101
EDL41524		507	15 L	15 x 24	382 x 610	4.0	101

### Safety Tabs - Printed - Closure with 2 flat wires

Code	*P	oz	ml	in x in	mm x mm	mils	µm
EDR41212		102	3 L	12 x 12	305 x 305	4.0	101
EDR41214		145	4.25 L	12 x 14	305 x 356	4.0	101
EDR41216		185	5.5 L	12 x 16	305 x 406	4.0	101
EDR41218		228	6.75 L	12 x 18	305 x 457	4.0	101
EDR41220		270	8 L	12 x 20	305 x 508	4.0	101
EDR41224		355	10.5 L	12 x 24	305 x 610	4.0	101
EDR41228		440	13 L	12 x 28	305 x 711	4.0	101
EDR41520		405	12 L	15 x 20	382 x 508	4.0	101
EDR41524		507	15 L	15 x 24	382 x 610	4.0	101

### Tear-off opening - Clear

Code	*P	oz	ml	in x in	mm x mm	mils	µm
SCL21520		405	12 L	15 x 20	381 x 508	2.0	51
SCL22424		1600	48 L	24 x 24	610 x 610	2.0	51
SCL33030		1833	55 L	30 x 30	760 x 760	3.0	76
SCL33037		2000	61 L	30 x 37	760 x 940	3.0	76
SCL43048		2600	81 L	30 x 48	760 x 1219	4.0	101



## THE PERFECT SOLUTION WHEN TWO HANDS ARE REQUIRED!

The TWIRLEM will stand completely by themselves without the necessity of a rack. The combination of the flat bottom and the wire closure offers a bag that stands by itself and remains open until the sample has been poured in

## Stand-Up Bags

●●●



Safety Tabs - Stand-up bag- Printed - Closure with 2 round wires

Code	*P	oz	ml	in x in	mm x mm	mils	µm
EPS-4590		18	400	4.5 x 9	114 x 229	4.0	101
EPS-6090		24	710	6 x 9	150 x 229	4.0	101

## START USING OUR WATER SAMPLING KITS AN ECONOMICAL ALTERNATIVE TO RIGID SAMPLING CONTAINERS!

The WATER SAMPLING KITS are designed to collect, carry and contain chlorinated water samples in aseptic conditions. Our sterile kits contain a non-toxic, neutralizing tablet with 10 mg or 30 mg of active sodium thiosulfate and are UPA-approved for drinking water analysis. **Packaging: Pk/100.**

## Water Sampling Kit

●●●



Safety Tabs - Stand-up bag- Printed - Closure with 2 round wires

Code	*P	Description	oz	ml	in x in	mm x mm	mils	µm
KWS-21100		1 x 10 mg Sodium Thiosulfate tablet	4	100	3 x 7	76 x 178	2.5	63
KWS-22200		1 x 30 mg Sodium Thiosulfate tablet	10	300	4.5 x 9	114 x 229	2.5	63

## SANI-SPONGE KIT IS CONVENIENT, EASY TO USE AND HELPS ELIMINATE SEVERAL TIME-CONSUMING STEPS.

SANI-SPONGE kit is designed to collect samples to detect the presence of microbiological contaminations such as *Listeria*, *Salmonella*, *E. coli*, and other food born pathogens on almost any surface.



# Sani-Sponge



\*



(5 x 20)



(4 x 100)

### SANI-SPONGE Kit with Dry Sponge

Code	*P	Description	oz	ml	in x in	mm x mm	mils	µm
KSS-61100		Dehydrated sponge	15	450	4.5 x 9	114 x 229	2.5	63
KSS-61105		Dehydrated sponge with gloves	15	450	4.5 x 9	114 x 229	2.5	63

### SANI-SPONGE Kit with Wet Sponge

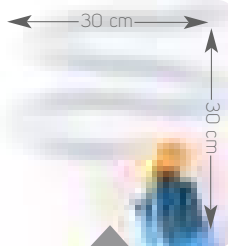
Code	*P	Description	oz	ml	in x in	mm x mm	mils	µm
KSS-67110-DE		DE-Neutralizing buffer	20	600	6.3 x 11	160 x 229	4.0	101
KSS-67110-LT		Lethen broth	20	600	6.3 x 11	160 x 229	4.0	101
KSS-67110-NE		Neutralizing buffer	20	600	6.3 x 11	160 x 229	4.0	101
KSS-67110-BPW		Buffered peptone water	20	600	6.3 x 11	160 x 229	4.0	101
KSS-67115-DE		DE-Neutralizing buffer with gloves	20	600	6.3 x 11	160 x 229	4.0	101
KSS-67115-LT		Lethen broth with gloves	20	600	6.3 x 11	160 x 229	4.0	101
KSS-67115-NE		Neutralizing buffer with gloves	20	600	6.3 x 11	160 x 229	4.0	101
KSS-67115-BPW		Buffered peptone water with gloves	20	600	6.3 x 11	160 x 229	4.0	101

SANI-SPONGE sampling kits are produced in accordance with HACCP, USDA, ACIA and CFIA requirements



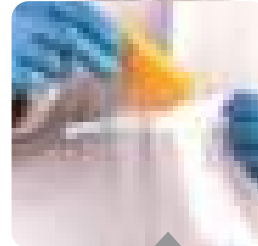
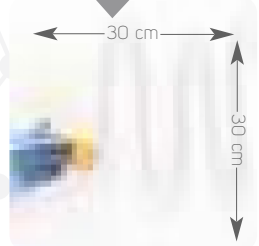
## INSTRUCTION STEP BY STEP

**1** Remove the tear-off strip and carefully take the sponge out (sterile gloves are recommended). Do not touch the inside of the bag



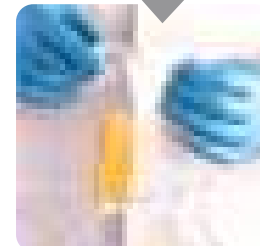
**2** Swab the sampling surface (suggested 30 x 30 cm area/12"x12") with the sponge in a vertical (up and down) motion

**3** Turn the sponge over and swab the sample area again, this time in a horizontal (left to right) motion



**4** Return the sponge in the sterile sampling bag with care

**5** Identify the sample on the write-on area with a permanent marker





## HELPS ELIMINATE SEVERAL TIME-CONSUMING STEPS!

The SANI-STICK is designed to collect samples to detect the presence of microbiological contaminations on any surface. The SANI-STICK allows swabbing of hard-to-reach areas. These sponges on sticks are widely used in the the food industry applications such as quality assurance procedures (QA/QC).

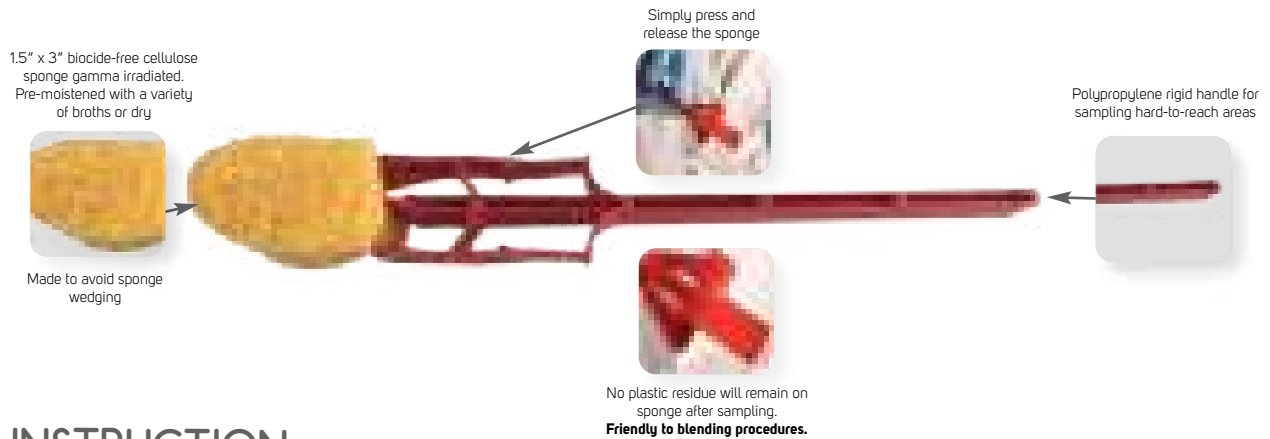
# Sani-Stick



(10 x 10)

SANI-STICK Kit with Wet Sponge

Code	*P	Description	oz	ml	in x in	mm x mm	mils	µm
KSS-67310-DE		Sponge on handle with DE-Neutralizing buffer	20	600	6.3 x 11	160 x 229	4.0	101
KSS-67310-LT		Sponge on handle with Lethen broth	20	600	6.3 x 11	160 x 229	4.0	101
KSS-67310-NE		Sponge on handle with Neutralizing buffer	20	600	6.3 x 11	160 x 229	4.0	101
KSS-67310-BPW		Sponge on handle with Buffered peptone water	20	600	6.3 x 11	160 x 229	4.0	101
KSS-67315-DE		Sponge on handle with DE-Neutralizing buffer with gloves	20	600	6.3 x 11	160 x 229	4.0	101
KSS-67315-LT		Sponge on handle with Lethen broth with gloves	20	600	6.3 x 11	160 x 229	4.0	101
KSS-67315-NE		Sponge on handle with Neutralizing buffer with gloves	20	600	6.3 x 11	160 x 229	4.0	101
KSS-67315-BPW		Sponge on handle with Buffered peptone water with gloves	20	600	6.3 x 11	160 x 229	4.0	101



## INSTRUCTION STEP BY STEP

- Remove the tear-off strip and carefully take the sani-stick by the handle
- The wet sponge is already on the handle, swipe it on the determined surface
- Press on the bottom of the handle to gently release the sponge in the sterile sampling bag
- Twirl the bag 3 to 4 times and close it with the tabs
- Identify the sample on the write-on area with a permanent marker

## PERFECT FOR THE MICROBIOLOGICAL ANALYSIS OF PASTY SAMPLES!

Once at the laboratory, solid food samples must be separated and homogenized. Labplas FILTRA-BAG is perfect for use in the homogenizer.



# Filtra-Bag



### FILTRA-BAG with Open Top - Clear

Code	*P	Description	oz	ml	in x in	mm x mm	mils	µm
SCT07012A		For 400 series blenders	55	1650	7 x 12	178 x 305	4.0	101

### FILTRA BAG with Tear-Off Protection Strip - Clear

Code	*P	Description	oz	ml	in x in	mm x mm	mils	µm
SCT-6090A		For 400 series blenders	24	710	6 x 9	152 x 229	4.0	101
SCT-7012A		For 400 series blenders	55	1650	7 x 12	178 x 305	4.0	101
SCT-1015A		For 3500 series blenders	92	2720	10 x 15	254 x 381	4.0	101
SCT-1515A		For 3500 series blenders	138	4000	15 x 15	381 x 381	4.0	101
SCT-1520A		For 3500 series blenders	405	12 L	15 x 20	381 x 508	4.0	101

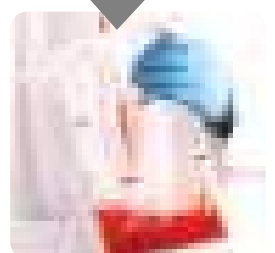
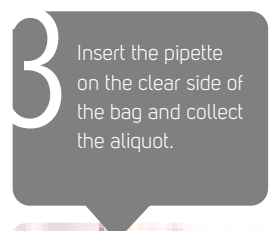
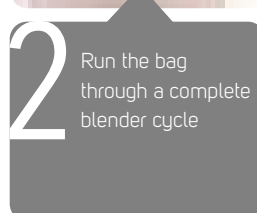
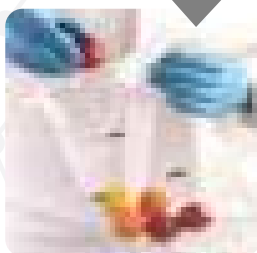
### FILTRA BAG - Safety Tabs - Clear - Closure with 1 round wire & 1 flat wire

Code	*P	Description	oz	ml	in x in	mm x mm	mils	µm
EFT-6090A		For 400 series blenders	24	710	6 x 9.9	152 x 229	4.0	101
EFT-7012A		For 400 series blenders	55	1650	7 x 12	178 x 305	4.0	101
EFT-1015A		For 3500 series blenders	92	2720	10 x 15	254 x 381	4.0	101
EFT-1515A		For 3500 series blenders	138	4000	15 x 15	381 x 381	4.0	101
EFT-1520A		For 3500 series blenders	405	12 L	15 x 20	381 x 508	4.0	101

## INSTRUCTION STEP BY STEP

Labplas FILTRA-BAG blender bags are designed to simplify taking an aliquot when working with samples which contain large amounts of residue and/or semi-solid/solid substances. Our precise Filter membrane prevents pipette blockage as well as uneven plate distribution.

- Polyethylene terephthalate (PET)/Polyethylene outer shell which practically eliminates the possibility of piercing the bag wall during blending;
- Filter membrane with 1840 holes per square inch with a pore size of 330 microns for optimal bacterial flow between compartments during blending.







## SECURE-T WHEN NO FILTRATION IS REQUIRED!

SECURE-T blender bags are now offered in a new, compact & easy to use SECURE-STRIP dispenser. The SECURE-T bags are made to handle the most robust blending applications. They are available for all sizes of blenders.

# Secure-T



### SECURE-T with Tear-Off Protection Strip - Clear

Code	*P	Description	oz	ml	in x in	mm x mm	mils	µm
SCL-4060		For 80 series blenders	7	205	4 x 6	102 x 152	3.0	76
SCL-5512		For 400 series blenders	36	1080	5.5 x 12	140 x 305	3.0	76
SCL-7012		For 400 series blenders	55	1650	7 x 12	178 x 305	3.0	76
SCL47012		For 400 series blenders	55	1650	7 x 12	178 x 305	4.0	101
SCL41214		For 3500 series blenders	151	4.5L	12 x 14	305 x 356	4.0	101
SCL41218		For 3500 series blenders	228	6.75L	12 x 18	305 x 457	4.0	101
SCL-1520		For 3500 series blenders	405	12 L	15 x 20	381 x 508	3.0	76
SCL41520		For 3500 series blenders	405	12 L	15 x 20	381 x 508	4.0	101

### SECURE-T with Tear-Off Protection Strip - Printed

Code	*P	Description	oz	ml	in x in	mm x mm	mils	µm
SCR-7012		For 400 series blenders	55	1650	7 x 12	178 x 305	3.0	76

### BLENDER BAG with Open Top - Clear

Code	*P	Description	oz	ml	in x in	mm x mm	mils	µm
SCLO7012		For 80 series blenders	55	1650	7 x 12	178 x 305	3.0	76
SCLO1520		For 400 series blenders	405	12 L	15 x 20	381 x 508	3.0	76

### BLENDER BAG with Open Top - Printed

Code	*P	Description	oz	ml	in x in	mm x mm	mils	µm
SCR07012		For 400 series blenders	55	1650	7 x 12	178 x 305	3.0	76

SECURE-T are blender bags for all microbiological uses in laboratories.

- Virgin polyethylene tubing extruded at temperatures ranging from 220°C to 240°C which guarantees internal sterility;
- Open bags are gamma irradiated;
- Maximum bag mouth opening to facilitate insertion of sample;
- Sterility certificate in every box which eliminates the need to call for documentation;
- Tear-off top which ensures internal sterility right up until the time of use (except for open bags).

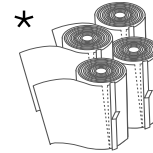


## THE DISPENSERS SOLUTION FOR YOUR BLANDER BAGS SUPPLIES

The SECURE-T Blender Bags are now available in a new, compact and easy to use SECURE-STRIP dispenser. This new approach to the conventional blender bag packaging offers a quicker access at all time.



## Secure-Strip



### SECURE-STRIP - Clear

Code	*P	Description	oz	ml	in x in	mm x mm	mils	µm
SCLR7012-B		For 400 series blenders 250 units in a box dispenser	55	1650	7 x 12	178 x 305	3.0	76
SCLR7012		For 400 series blenders 4 rolls of 250 units	55	1650	7 x 12	178 x 305	3.0	76

## Application

Labplas SECURE-T Blender Bags provide a malleable yet durable and contaminant-free container for the even blending of your samples. Applications vary from general blending purposes to sample preparation for analysis testing.

The new dispenser solution, Secure-Strip, allows you to have all the product advantages of the blender bags in an easy, secure and friendly-use dispenser.



## Features & Benefits

- Easy storing and will follow you anywhere in the lab;
- Tear-off junction between each bag ensures internal sterility right up until the time of use;
- Sterility confirmation documentation (CofA) is available in each box (traceable certificate);
- Product meets USDA and ACIA industry standards and is made of FDA-compliant material;
- All the benefits of a closed and sterile blender bag with the features and ease of an opened blender bag.

## Product technical specification

The plastic tubing used in manufacturing our sampling bags is extruded at temperatures ranging between 220°C and 240°C and is therefore internally sterile. Follow up tests are also performed to assure continued sterility after processing. Labplas Sterile Sampling Bags have consistently and successfully been tested for sterility after 5 years of shelf life.

- R-Nase, D-Nase, Pyrogen and BPA free;
- 250 sterile blender bags ready to use.



**Looking for a permanent solution?**  
Ask us for the stainless steel dispenser. Another way of insuring easiness of use in your workplace. Code: SA3-7012



## SAMPLING ACCESSORIES TO FACILITATE WORK IN YOUR LAB!

Labplas offers a complete range of accessories designed to simplify sample processing and increase efficiency in your laboratory

## Accessories



### Labrack

The LABRACK allows for sample batch preparation prior to blending, as well as sample storage after the blending.

- Made of 100% stainless steel;
- Stores up to 10 - 400 series blender bags;
- Rubber feet to keep it stable on counter tops;
- Bottom basin can easily hold 400ml of liquid;
- Fits in most incubators;
- Autoclavable.

**PRODUCT CODE: SA4-7012**

### Work Station

Designed for the 400 series blender bags and allows the lab technician to easily access the sample without the need to hold the bag open with one hand while taking the aliquot with the other.

- Made of Polycarbonate plastic;
- Exceptionally strong, transparent and flexible.

**PRODUCT CODE: SA1-7012**



### Closure Clips

These are used in conjunction with the LABRACK or on their own to temporarily close the bag and store the samples

- Available in 3 sizes for blender 80, 400 and 3500 series;
- Sold in packs of 10 units.

**PRODUCT CODE: SA2-4060 (80 SERIES)  
SA2-7012 (400 SERIES)  
SA2-1520 (3500 SERIES)**

## BRING INNOVATION TO YOUR LABORATORY!

Labplas is constantly on the lookout to understand the needs of its customers in order to introduce new work tools.



## Accessories



### Rack'N'Lab

Labplas' RACK'N'LAB is best used to transport bags used in food testing and environmental water sampling amongst many other industries. Its innovative design allows multiple bags to be used whilst being held upright without the need for bottles or specifically designed bags.

This light weight and versatile rack takes up very little storage space when stored in its flat form and is available in two different sizes.

The RACK'N'LAB is made out of FDA virgin polypropylene and is autoclavable. Available in two sizes: 12 in x 6.75 x 3 in or 12 in x 9.72 in x 4.6 in.

**PRODUCT CODE :** SA5-3070  
SA5-7012



### Sterile Blue Gloves

- Made of polyethylene;
- Gamma sterilized.

Packaging: 1 box of 50 pairs of gloves (wrapped in pairs)

**PRODUCT CODE :** SA7-GLOVES

### Detectable Blue Pen

Detectable Retractable Blue Clip Pens. Ideal for use where a one piece pen is stipulated.

- Made with Polymer FDA approved material;
- Entirely metal detectable & X-ray visible;
- Triangular cross section for a comfy yet sturdy grip.

Packaging: 1 box of 10 individually wrapped pens

**PRODUCT CODE :** SA6-DETECPEN



## CUSTOMIZATION IS OUR SECOND NATURE!

We understand that the customers sometimes have very specific needs and for this reason Labplas offers the possibility to customize your bags. Flexibility being one of our strengths, we are always opened to work with you on creating a new product that will meet your requirements.



## Customization and Private Branding



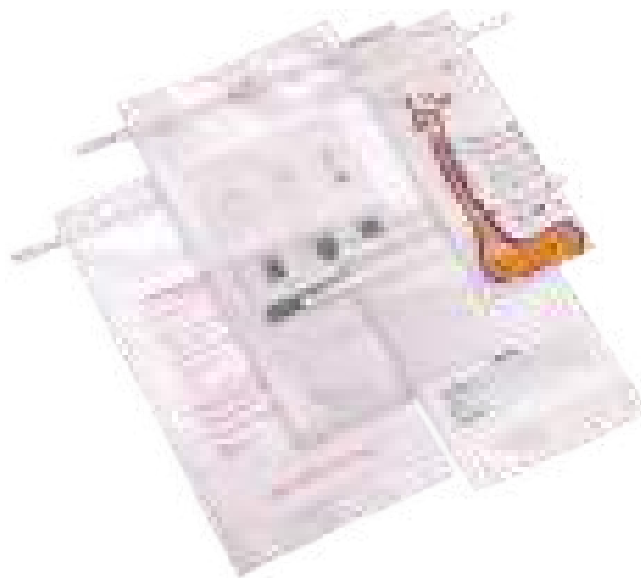
### Printing of your logo and special instructions

Create brand awareness by printing your logo on the bags! Let us know your specifics and we will create a unique bag for your needs.

- Two-color limitation.

### Special measurements

- Thickness of 2.5, 3.0, 3.5 or 4 mil.in or more;
- Minimum width of 3 inches, no maximum;
- Minimum length of 5 inches, no maximum.



### Custom Packaging

- Units per box ;
- Clean room special packaging ;
- Units of sponges or special inserts per bag.

**Minimum quantity to be determined upon quote of product.**

### Special Kits and Insertion

Labplas offers the option of customized insertions such as:

- Wet sponges (your unique formula of media);
- Sterile objects such as spoons, swabs, clippers, etc.;
- Pre-rolled bags for diagnostic kits;
- Cotton tissue with several choices of media for analysis;
- Boot swabs with several choices of media for analysis;
- Any other object you would like to be inserted in your bags.

**TWIRLEM**<sup>®</sup>

**TWIRLEM**<sup>®</sup>  
E.C.O.

**TWIRL BLUE**

**SECURE-T**<sup>®</sup>

**FILTRA BAG**<sup>®</sup>

**LAB RACK**

**Sani-Stick**<sup>®</sup>

**SANI SPONGE**<sup>®</sup>

RackLab

Follow us on LinkedIn



Contact us for all your sampling needs.

